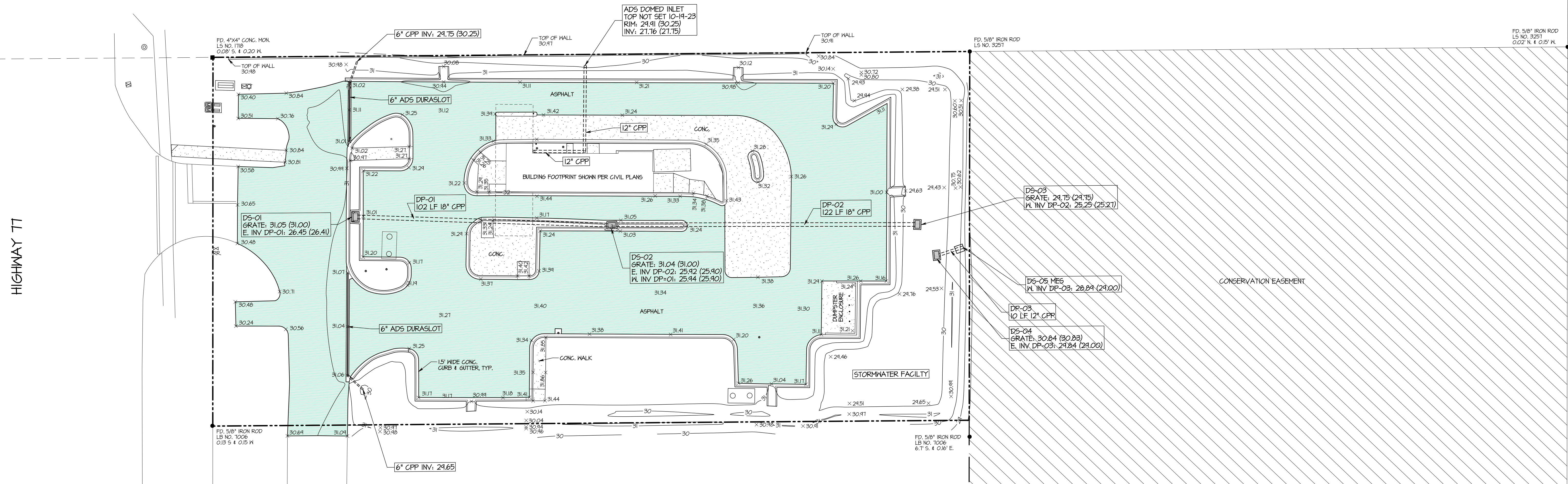


FOR: C-MILES CONSTRUCTION, INC.

STORMWATER AND UTILITY AS-BUILT OF CHECKERS
LYNN HAVEN, FLORIDA



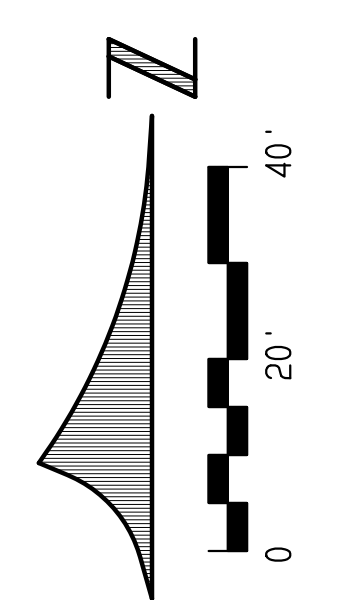
HIGHWAY 77

CONSERVATION EASEMENT

BOUNDARY LINE FROM COUNTY WIDE SURVEYING, INC.
DIGITAL FILE: 10-044.DWG

SYMBOLS & ABBREVIATIONS

N	NORTH
S	SOUTH
E	EAST
W	WEST
°	DEGREES
'	MINUTES OR FEET
"	SECONDS OR INCHES
FD.	FOUND
COR.	CORNER
LS	LAND SURVEYOR
LB	LAND SURVEYOR BUSINESS NUMBER
NO.	IDENTIFICATION
I.D.	CONCRETE
CONC.	MONUMENT
MON.	ELEVATION
EL.	CORRUGATED PLASTIC PIPE
C.P.P.	POLYVINYL CHLORIDE
P.V.C.	INVERT
INV.	BACKFLOW PREVENTER
B.F.P.	ASSEMBLY
AS.SY.	CLEANOUT
C.O.	SANITARY SEWER
S.S.	DOUBLE DETECTOR CHECK VALVE
DDCV	WATER MAIN
-M-	RE-USE MAIN
-RC-	
•	BOLLARD
⊕	WATER VALVE
⊙	FIRE HYDRANT
⊗	WATER METER



THIS SURVEY IS BASED ON THE U.S. SURVEY FOOT UNIT OF MEASUREMENT.
RTK GPS REFERENCED TO L-NET GLOBAL NAVIGATION SATELLITE SYSTEM ~ NAVD 88
LOCATIONS OF SUBSURFACE FOUNDATIONS HAVE NOT BEEN DETERMINED AND ARE NOT INDICATED HEREON.
PLAN DATA IS SHOWN IN PARENTHESES.
THIS IS AN AS-BUILT SURVEY OF STORM DRAINAGE SYSTEM, WATER AND SANITARY SEWER SERVICES.

STORMWATER AS-BUILT

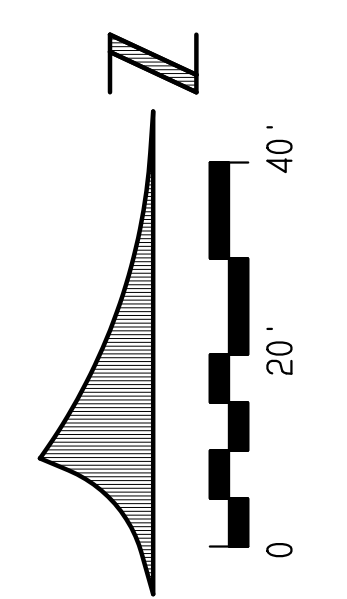
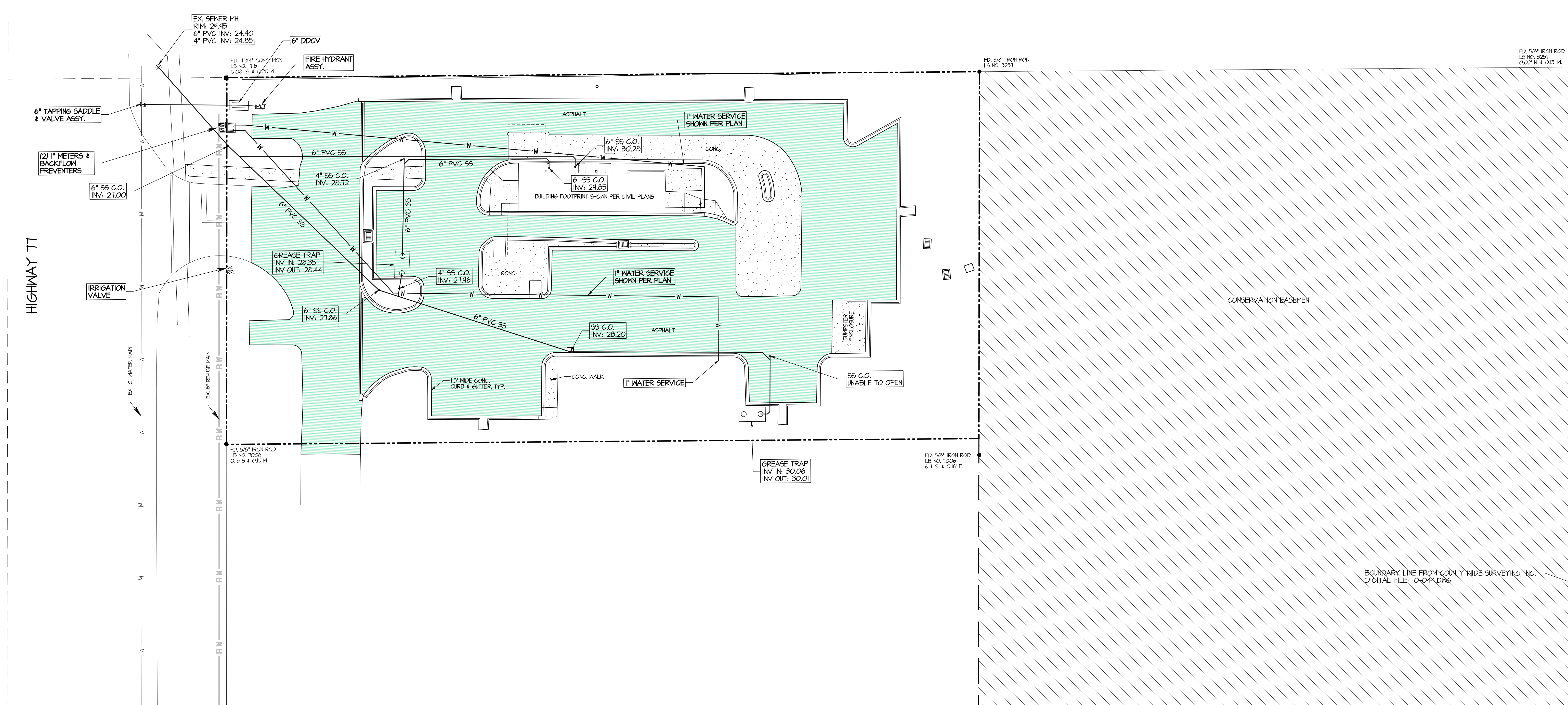
BUCHANAN & HARPER, INC.
ENGINEERING • PLANNING • SURVEYING • LANDSCAPE ARCHITECTURE
735 WEST 11TH STREET, PANAMA CITY, FLORIDA 32401 TELEPHONE (850) 763-7427

THE UNDERSIGNED, TODD TINDELL, FLORIDA LAND SURVEYOR NO. 4450, HEREBY CERTIFIES THAT THE SURVEY AND/OR INFORMATION SHOWN HEREON CONFORMS TO THE STANDARDS OF PRACTICE FOR PROFESSIONAL SURVEYORS AND MAPPERS AS OUTLINED IN RULE 5J-17, FLORIDA ADMINISTRATIVE CODE.

PLAT OF AS-BUILT SURVEY SCALE 1" = 20'
SURVEYED 10-18-23 DRAWN 10-21-23 IMPROVEMENTS PARTIALLY LOCATED, SEE NOTES
REVISED _____
REVISED _____
SOURCE OF INFORMATION CIVIL PLANS FOR MULTI-TENANT AT HIGHWAY 77, PREPARED BY PANHANDLE ENGINEERING, INC.
BEARING REFERENCE SEE NOTES
ELEVATION REFERENCE PER PLANS NOTED ABOVE
F.R. 1163 P.A. 33 JOB NO. 13140 FILE NO. E 4161 SHEET NO. 1 OF 2

TERRAMODEL FILE 13140 / LAYER CODE P5604-5TORM

THE SEAL APPEARING ON THIS DOCUMENT WAS AUTHORIZED BY: T. TODD TINDELL, P.S.M. NO. 4450 ON DATE OF DIGITAL SIGNATURE.



UTILITY AS-BUILT

BUCHANAN & HARPER, INC.	
ENGINEERING • PLANNING • SURVEYING • LANDSCAPE ARCHITECTURE	
735 WEST 11TH STREET, PANAMA CITY, FLORIDA 32401 TELEPHONE (850) 763-7427	
THE UNDERSIGNED, <u>TODD TINDELL</u> , FLORIDA LAND SURVEYOR NO. <u>4450</u> , HEREBY CERTIFIES THAT THE SURVEY AND/OR INFORMATION SHOWN HEREON CONFORMS TO THE STANDARDS OF PRACTICE FOR PROFESSIONAL SURVEYORS AND MAPPERS AS OUTLINED IN RULE 5J-17, FLORIDA ADMINISTRATIVE CODE.	
PLAT OF	AS-BUILT SURVEY
SURVEYED	10-18-23
DRAWN	10-21-23
IMPROVEMENTS	PARTIALLY LOCATED, SEE NOTES
REVISOR	
REVISOR	
REVISOR	
SOURCE OF INFORMATION	CIVIL PLANS FOR MULTI-TENANT AT HIGHWAY 77, PREPARED BY PANHANDLE ENGINEERING, INC.
BEARING REFERENCE	SEE NOTES
ELEVATION REFERENCE	PER PLANS NOTED ABOVE
F.R.	1163
P.A.	33
JOB NO.	13140
FILE NO.	E 4161
SHEET NO.	2 OF 2

THE SEAL APPEARING ON THIS DOCUMENT WAS AUTHORIZED BY: T. TODD TINDELL, P.S.M. NO. 4450 ON DATE OF DIGITAL SIGNATURE.